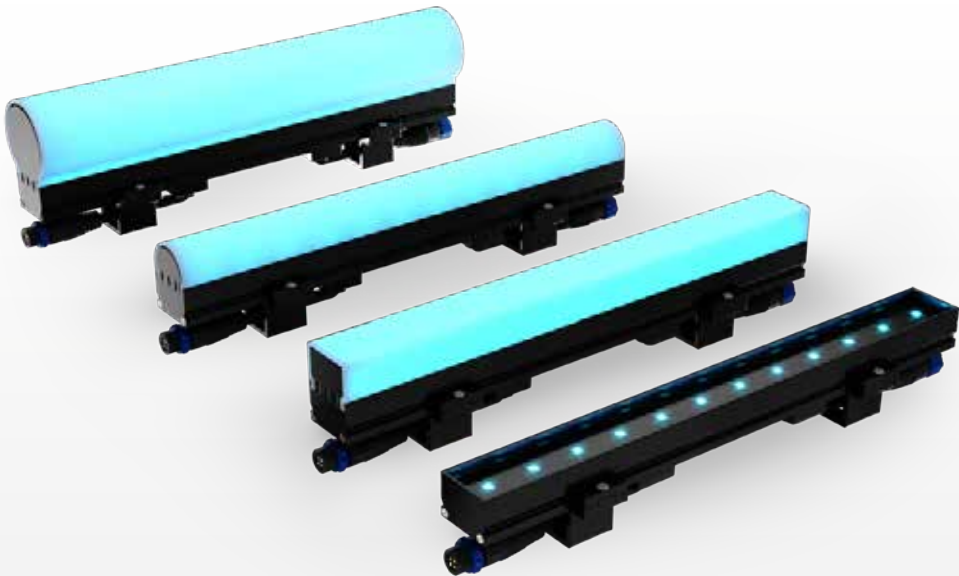


# SCIMITAR 12



## FEATURES

LED

IP67

remote PSU

RDM/DMX

IK 10

-40° +50°

## CERTIFICATIONS



## TREATMENTS

## FINITURE

|                  |    |
|------------------|----|
| BLACK - RAL 9005 | 11 |
|                  |    |
|                  |    |
|                  |    |
|                  |    |
|                  |    |
|                  |    |
|                  |    |
|                  |    |
|                  |    |

## LED

|                   |    |
|-------------------|----|
| FULL COLOR (RGBW) | FC |
|                   |    |
|                   |    |
|                   |    |
|                   |    |
|                   |    |
|                   |    |
|                   |    |
|                   |    |
|                   |    |

## LENS

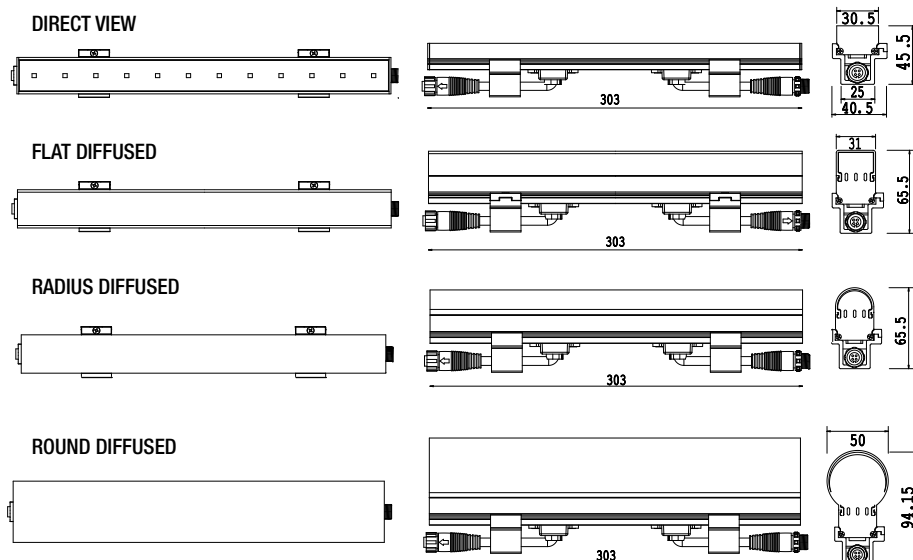
|          |    |
|----------|----|
| DW 130°  | DI |
| RaD 160° | RA |
| RoD 165° | RO |
| FD 160°  | FL |
|          |    |
|          |    |
|          |    |
|          |    |
|          |    |
|          |    |

SCIMITAR 12

03.SWB001E



## TECHNICAL



## ACCESSORIES ON REQUEST



Push Lock Type 2+4 Extension Cable - IP67 rated

- 0522SW05.005** • length 0.5 mt - 1.65 ft
- 0522SW05.01** • length 1 mt - 3.3 ft
- 0522SW05.025** • length 2.5 mt - 8.25 ft
- 0522SW05.05** • length 5 mt - 16.5 ft
- 0522SW05.10** • length 10 mt - 33 ft
- 0522SW05.20** • length 20 mt - 66 ft



**0522SW07** • Locking Profile - U profile easy to assemble due to its plug-in mounting



**0522SW06** • Push Lock Type 2+4 Pin Female Plug Cap - IP67 rated

| OUTPUT                | • 12 x 4-colors LEDs (RGBW)   |                      |                     |                    |
|-----------------------|---|----------------------|---------------------|--------------------|
|                       | • LED lifespan: 60,000 L70 @ 50° C (full output)  |                      |                     |                    |
| OPTICAL GROUP         | Direct view 130°  | Radius diffused 160° | Round diffused 165° | Flat diffused 160° |
| LUMEN FLUX            | 578 lm/m  | 437 lm/m             | 407 lm/m            | 387 lm/m           |
| LUMINOUS INTENSITY    | 176 cd/m  | 83 cd/m              | 76 cd/m             | 69 cd/m            |
| EFFICACY              | 25 lm/W   | 19 lm/W              | 18 lm/W             | 17 lm/W            |
| CONTROL & PROGRAMMING | <ul style="list-style-type: none"> <li>• Pixel Pitch: Pixel pitch is configurable via RDM, max 40pixel/m</li> <li>• Color resolution: 4 x 14-bit (Gamma correction)</li> <li>• Auto White: Algorithms enable auto control of white LED by 3-channel RGB values</li> <li>• Addressing: RDM (Group of Remote Addressable Systems)</li> <li>• Monitoring: Voltage Monitoring, Temperature Monitoring, Status Monitoring, Power Cycle Monitoring, Lumen-Maintenance Life Monitoring</li> <li>• PWM Frequency: 1,600Hz flicker free dimming to 0.1%</li> <li>• DMX Compliance: USITT DMX512-1990</li> <li>• RDM Compliance: 4ANSI/ESTA E1.20-2010</li> </ul> |                      |                     |                    |
| ELECTRICAL            | <ul style="list-style-type: none"> <li>• External CC PSU Led driver Power-U</li> <li>• Operating Voltage: 48Vdc</li> <li>• Consumption: 8.5 W max @ full output, steady state</li> <li>• Maximum in Chain: Max 11 m or 32 pieces (varies by selected dmx personality)</li> </ul>  |                      |                     |                    |
| CONNECTIONS           | • Push Lock Type 2+4 Pin Waterproof Connector   |                      |                     |                    |
| SAFETY DEVICES        | <ul style="list-style-type: none"> <li>• Automatic over temperature protection</li> <li>• Cooling by free air convection</li> </ul>   |                      |                     |                    |
| ENVIRONMENTAL         | <ul style="list-style-type: none"> <li>• Vibration Resistance: Complies with ANSI C136.31-2010</li> <li>• Corrosion Resistance: Complies with ASTM B117 standard</li> <li>• Humidity (max): 0 to 98%, non-condensing</li> </ul>   |                      |                     |                    |
| PHYSICAL              | <ul style="list-style-type: none"> <li>• Housing: Extruded Aluminium - End Cap Material: Aluminium</li> <li>• Front Material: Extruded Polycarbonate UV and impact resistant opal diffuser</li> </ul>   |                      |                     |                    |
| WEIGHT                | 0.40 Kg (0.81 lbs)  | 0.42 Kg (0.92 lbs)   | 0.44 Kg (0.94 lbs)  | 0.46 Kg (1.01 lbs) |