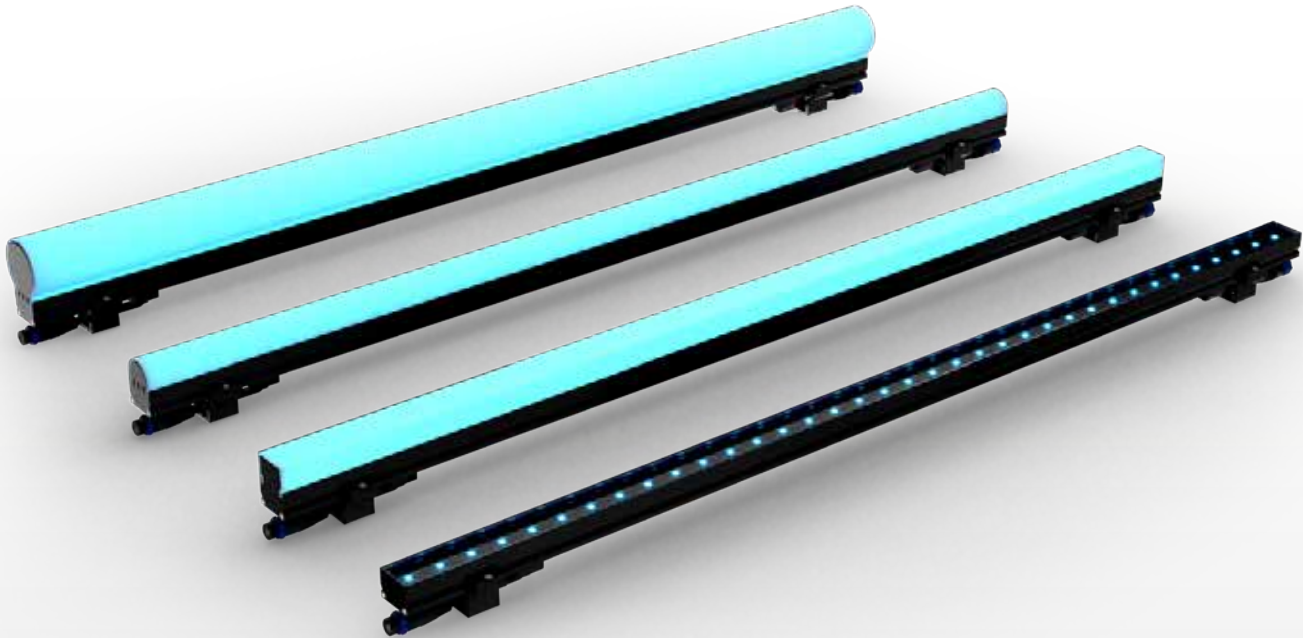


SCIMITAR 36



FEATURES

LED

IP67

remote PSU

RDM/DMX

IK 10

-40° +50°

CERTIFICATIONS



TREATMENTS

FINITURE

BLACK - RAL 9005	11

LED

FULL COLOR (RGBW)	FC

LENS

DW 130°	DI
RaD 160°	RA
RoD 165°	RO
FD 160°	FL

SCIMITAR 36

03.SWB003E



TECHNICAL

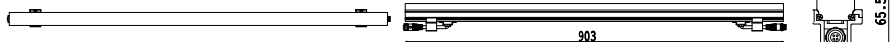
DIRECT VIEW



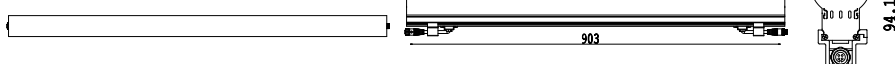
FLAT DIFFUSED



RADIUS DIFFUSED



ROUND DIFFUSED



ACCESSORIES ON REQUEST



Push Lock Type 2+4 Extension Cable - IP67 rated

- 0522SW05.005** • length 0.5 mt - 1.65 ft
- 0522SW05.01** • length 1 mt - 3.3 ft
- 0522SW05.025** • length 2.5 mt - 8.25 ft
- 0522SW05.05** • length 5 mt - 16.5 ft
- 0522SW05.10** • length 10 mt - 33 ft
- 0522SW05.20** • length 20 mt - 66 ft



0522SW07 • Locking Profile - U profile easy to assemble due to its plug-in mounting



0522SW06 • Push Lock Type 2+4 Pin Female Plug Cap - IP67 rated

OUTPUT	• 36 x 4-colors LEDs (RGBW)			
	• LED lifespan: 60,000 L70 @ 50° C (full output)			
OPTICAL GROUP	Direct view 130°	Radius diffused 160°	Round diffused 165°	Flat diffused 160°
LUMEN FLUX	578 lm/m	437 lm/m	407 lm/m	387 lm/m
LUMINOUS INTENSITY	176 cd/m	83 cd/m	76 cd/m	69 cd/m
EFFICACY	25 lm/W	19 lm/W	18 lm/W	17 lm/W
CONTROL & PROGRAMMING	<ul style="list-style-type: none"> • Pixel Pitch: Pixel pitch is configurable via RDM, max 40pixel/m • Color resolution: 4 x 14-bit (Gamma correction) • Auto White: Algorithms enable auto control of white LED by 3-channel RGB values • Addressing: RDM (Group of Remote Addressable Systems) • Monitoring: Voltage Monitoring, Temperature Monitoring, Status Monitoring, Power Cycle Monitoring, Lumen-Maintenance Life Monitoring • PWM Frequency: 1,600Hz flicker free dimming to 0.1% • DMX Compliance: USITT DMX512-1990 • RDM Compliance: 4ANSI/ESTA E1.20-2010 			
ELECTRICAL	<ul style="list-style-type: none"> • External CC PSU Led driver Power-U • Operating Voltage: 48Vdc • Consumption: 24 W max @ full output, steady state • Maximum in Chain: Max 11 m or 32 pieces (varies by selected dmx personality) 			
CONNECTIONS	• Push Lock Type 2+4 Pin Waterproof Connector			
SAFETY DEVICES	<ul style="list-style-type: none"> • Automatic over temperature protection • Cooling by free air convection 			
ENVIRONMENTAL	<ul style="list-style-type: none"> • Vibration Resistance: Complies with ANSI C136.31-2010 • Corrosion Resistance: Complies with ASTM B117 standard • Humidity (max): 0 to 98%, non-condensing 			
PHYSICAL	<ul style="list-style-type: none"> • Housing: Extruded Aluminium - End Cap Material: Aluminium • Front Material: Extruded Polycarbonate UV and impact resistant opal diffuser 			
WEIGHT	1.26 Kg (2.77 lbs)	1.28 Kg (2.82 lbs)	1.30 Kg (2.86 lbs)	1.36 Kg (2.99 lbs)