

Introduction

| | |
|-----------------------|----|
| SINCE 1980 | 05 |
| RELIABILITY EXPERTISE | 07 |
| VALUE CHAIN | 09 |
| COSTUMIZATION | 11 |
| DURABILITY | 13 |
| SUSTAINABILITY | 15 |
| PASSION | 17 |

Underwater series

| | |
|----------|----|
| DIVE | 19 |
| AKHELIOS | 21 |
| DONUT | 23 |

Outdoor series

| | |
|---------|----|
| HELIOS | 25 |
| DOCTUS | 27 |
| BRICK | 31 |
| HI-LINE | 33 |
| FOCUS | 39 |

Indoor series

| | |
|-------------|----|
| FOCUS | 41 |
| VICE | 43 |
| FREELINE | 45 |
| ACCESSORIES | 47 |

Lighting control system

| | |
|--------------------|----|
| DRIVENET | 51 |
| SYSTEM INTEGRATION | 53 |
| NOTE | 55 |

Name Glossary

.d

Products marked with “**.d**” extension, are products that have RDM/DMX PCB on board and which only need to be connected to RDM/DMX signal and power supply.

.s

Products marked with “**.s**” extension, are products that have PSU and RDM/DMX PCB on board and which only need to be connected to RDM/DMX signal and power cable.

.i or .o

Products marked with “**.i** or **.o**” extension, are products that can be used indoors or outdoors respectively according to their IP rating.

plug in

Products with the “**plug in**” extension, are easy-to-operate products that need only the power supply (constant voltage).

white

Products with the “**white**” extension, are products with a white light source, which can be different in intensity and CCT (Correlated Color Temperature).

full color

Products with the “**full color**” extension, are products with a light source colors in a single lens, with high color mixing.

zoom

Products with the “**zoom**” extension, are products with a zoomable optics.

evo

Products with the “**evo**” extension, are products with integrated pixel control.



SINCE 1980

DTS was founded in 1980 with the aim of giving shape to the dream of its founder Dante Latteo “...to capture the beauty of colors and the charm of light in an object, to be used according to one’s own desire.”

This is how the company comes to life. Step by step, the mission of DTS is to reproduce the perfection of the spectacle of nature, making it accessible to all through innovative and highly technological tools: headlights.

Since then, every ray of light produced has been meticulously cared for. The experience gained over the years has led to the creation of products that are increasingly more efficient, able to guarantee.

reliability expertise

homogeneous colors and flawless results over time, capable of creating uniform lighting scenarios with great impact, indispensable for high-level events and breathtaking settings.

The long-standing presence of DTS on the market has also allowed the company to be able to seize and anticipate changes and new needs over time. We are ISO 9001:2015 certified and recognized by an increasing number of architects, light designers, distributors and system integrators as the industry benchmark for quality and innovation

The medieval tower, the highest in Italy and symbol of Bologna, is a universally known monument. X BRICK and BRICK proved to be the perfect choice for this installation that respected both the original colour of the bricks and the city's desire for innovation, curious to see its symbol in a new light.

Medieval 'Asinelli Tower' - Bologna (ITALY)





VALUE CHAIN

agility chain made in Italy

From the concept to final testing, every step of the production process is carried out in-house, ensuring not only highest quality but also an unmatched agility in responding to customer requests.

Our chain, concentrated in an area composed of three factories, allows us to eliminate the time required for product transfer, to avoid communication errors related to coordination between multiple sites and to cancel the higher costs related to logistics and external quality controls.

The fragmentation of the production chain inevitably reflects on the customer, increasing waiting times and overall costs, even more when customs duties are imposed between the various stages of products development. Our choice allows us to avoid all obstacles, ensuring a more lean, economical and, above all, reliable process.

opportunity specific need

In keeping with the complete control of the internal production chain and the advantages that result from it, we are able to offer tailor-made solutions to meet every specific need.

Whether it is modifications to standard products or the development of custom projects for small events, luxury architecture and outdoor private areas, our departments work in harmony so that the request is met in full respect of the needs and time.


Moreover, unlike companies that force clients to buy large volumes, the presence of all phases in a single area allows us to realize even small customized quantities, avoiding complex and expensive prototyping steps. This approach not only reduces the costs to the customer, but also has a positive impact on the environment by limiting overproduction and reducing waste.

With us, every client is certain to obtain customized, efficient and sustainable solutions.



CUSTOMIZATION

DURABILITY



Dubai Water Canal is a 2.9 km long structure that links the Business Bay with the Arabic Gulf. One of the main visual attractions of the complex is the giant artificial waterfall 160 meters long of the Sheikh Zayed Dubai. A technological marvel that at night it turns on with the eye-catching magic of dynamic color lighting delivered by 240 HELIOS BRONZE FC units. This DTS underwater spotlights perfectly perform the challenging task of creating a water body that did not exist anywhere else in the world.

Sheikh Zayed Bridge - Dubai (UAE)

bronze
marine

excellent
materials

The quality and durability of our headlights are guaranteed by the use of excellent materials, carefully chosen to withstand the most severe weather and environmental conditions. 316L stainless steel, marine bronze and the latest generation of LED lights are just some of the elements that ensure a long life to our products.

In particular, marine bronze, used for underwater spotlights, offers a very high resistance to corrosion even in extreme environments, minimizing the need for maintenance. This results in both economic and operational savings in the long term, with clear benefits for the environment thanks to the reduction of wastefulness and minimization of rubbish.

Relying on our headlights means making a long-term investment that continues to offer excellent performance year by year, without ever letting you down.



long-lasting value

For us, innovating means creating solutions capable of meeting the needs of a market that changes over time, while always maintaining efficiency of use and integrity of outer appearance.

This philosophy allows us not only to significantly reduce waste, but also to offer solutions that represent real sustainability. Our headlights are not short-term consumer products, intended to be replaced every year in function of a precise marketing strategy. They will not disappear from the market or be scrapped, depriving customers of the possibility to find spare parts or forcing them to switch to later models. On the contrary, our policy is to minimize total cost of ownership (TCO).

For those who invest in the lighting sector and especially in the world of Architainment, sustainability takes on a concrete meaning: the possibility to create solid projects with lasting value, with consequent benefits both economic and environmental.



SUSTAINABILITY

PASS

A photograph of an ornate theater interior. The scene is dominated by a large, multi-tiered chandelier with numerous glowing lights, positioned in the upper right. Below it, a balcony with ornate wooden railings and decorative panels curves across the frame. The lighting is warm and golden, creating a sense of grandeur and elegance. The background shows a stage area with architectural details like arches and columns, though they are slightly out of focus.

ION

more than just a product

In every headlight we make, there is something more than just technology.

Every step of the process is the fruit of our passion and dedication, because for us it's not just about creating tools: we want to give life something that transmits emotions and tells stories through light and its colors.

Because when you put your soul in... the result is simple to see! It's life. It's emotion.



UNDERWATER



DIVE 1 full color

| | | |
|----------------------------|------------------|---------|
| H 86 mm | L 56 mm | D 46 mm |
| LED source | RGBW - 415 lumen | |
| Installation unit x output | 24 Vdc 700ma | 6 pcs |
| | 48 Vdc 700ma | 12 pcs |

| | |
|----------------------|-----------------------|
| PSU constant current | Remote with Drivenet |
| Finiture | 316L Steel and bronze |
| Optics | 10° - 25° - 40° |
| Filters | On demand |

| | | | |
|------|-----------------------|-----------|--------|
| Code | 03.LPB006E99FC | 10 | spot |
| | | 25 | medium |
| | | 40 | wide |



DIVE 3 full color

| | | |
|----------------------------|-------------------|---------|
| H 116 mm | L 92 mm | D 75 mm |
| LED source | RGBW - 1245 lumen | |
| Installation unit x output | 24 Vdc 700ma | 2 pcs |
| | 48 Vdc 700ma | 4 pcs |

| | |
|----------------------|-----------------------|
| PSU constant current | Remote with Drivenet |
| Finiture | 316L Steel and bronze |
| Optics | 10° - 25° - 40° |
| Filters | On demand |

| | | | |
|------|-----------------------|-----------|--------|
| Code | 03.LPB011E99FC | 10 | spot |
| | | 25 | medium |
| | | 40 | wide |



DIVE 6 N full color

| | | |
|----------------------------|-------------------|----------|
| H 173 mm | L 153 mm | D 139 mm |
| LED source | RGBW - 2300 lumen | |
| Installation unit x output | 24 Vdc 700ma | 1 pcs |
| | 48 Vdc 700ma | 2 pcs |

| | |
|----------------------|-----------------------|
| PSU constant current | Remote with Drivenet |
| Finiture | 316L Steel and bronze |
| Optics | 10° - 25° - 40° |
| Filters | On demand |

| | | | |
|------|-----------------------|-----------|--------|
| Code | 03.LPB101E99FC | 10 | spot |
| | | 25 | medium |
| | | 40 | wide |



DIVE 12 N full color

| | | |
|----------------------------|-------------------|----------|
| H 182 mm | L 195 mm | D 195 mm |
| LED source | RGBW - 4580 lumen | |
| Installation unit x output | 24 Vdc 1400ma | 1 pcs |
| | 48 Vdc 700ma | 1 pcs |

| | |
|----------------------|-----------------------|
| PSU constant current | Remote with Drivenet |
| Finiture | 316L Steel and bronze |
| Optics | 10° - 25° - 40° |
| Filters | On demand |

| | | | | |
|------|-------------------------------|-----------------|-----------|--------|
| Code | 03. LIB only for 48Vdc | 100E99FC | 10 | spot |
| | LPB only for 24Vdc | | 25 | medium |
| | | | 40 | wide |



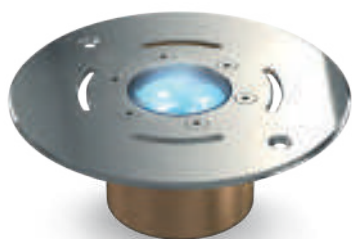


AKHELIOS 1 full color

| | | |
|----------------------------|--------------|------------------|
| H 72 mm | L 75 mm | D 75 mm |
| LED source | | RGBW - 415 lumen |
| Installation unit x output | 24 Vdc 700ma | 6 pcs |
| | 48 Vdc 700ma | 12 pcs |

| | |
|----------------------|-----------------------|
| PSU constant current | Remote with Drivenet |
| Finiture | 316L Steel and bronze |
| Optics | 10° - 25° - 40° |
| Filters | On demand |

| | | | |
|------|-----------------------|-----------|--------|
| Code | 03.LPS006E99FC | 10 | spot |
| | | 25 | medium |
| | | 40 | wide |



AKHELIOS 3 full color

| | | |
|----------------------------|--------------|-------------------|
| H 84 mm | L 165 mm | D 165 mm |
| LED source | | RGBW - 1245 lumen |
| Installation unit x output | 24 Vdc 700ma | 2 pcs |
| | 48 Vdc 700ma | 4 pcs |

| | |
|----------------------|-----------------------|
| PSU constant current | Remote with Drivenet |
| Finiture | 316L Steel and bronze |
| Optics | 10° - 25° - 40° |
| Filters | On demand |

| | | | |
|------|-----------------------|-----------|--------|
| Code | 03.LPS011E99FC | 10 | spot |
| | | 25 | medium |
| | | 40 | wide |

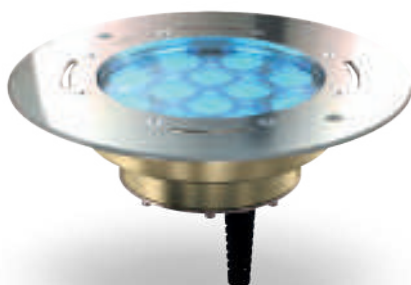


AKHELIOS 6 N full color

| | | |
|----------------------------|--------------|-------------------|
| H 152 mm | L 235 mm | D 235 mm |
| LED source | | RGBW - 2350 lumen |
| Installation unit x output | 24 Vdc 700ma | 1 pcs |
| | 48 Vdc 700ma | 2 pcs |

| | |
|----------------------|-----------------------|
| PSU constant current | Remote with Drivenet |
| Finiture | 316L Steel and bronze |
| Optics | 10° - 25° - 40° |
| Filters | On demand |

| | | | |
|------|-----------------------|-----------|--------|
| Code | 03.LPS101E99FC | 10 | spot |
| | | 25 | medium |
| | | 40 | wide |



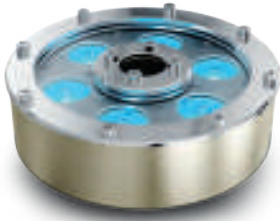
AKHELIOS 12 N full color

| | | |
|----------------------------|---------------|-------------------|
| H 153 mm | L 275 mm | D 275 mm |
| LED source | | RGBW - 4580 lumen |
| Installation unit x output | 24 Vdc 1400ma | 1 pcs |
| | 48 Vdc 700ma | 1 pcs |

| | |
|----------------------|-----------------------|
| PSU constant current | Remote with Drivenet |
| Finiture | 316L Steel and bronze |
| Optics | 10° - 25° - 40° |
| Filters | On demand |

| | | | | | |
|------|----------------|----------------|-----------------|-----------|--------|
| Code | 03. LIS | only for 48Vdc | 100E99FC | 10 | spot |
| | LPS | only for 24Vdc | | 25 | medium |
| | | | | 40 | wide |





DONUT 6 full color

| | | |
|----------------------------|-------------------|----------------------|
| H 75 mm | D 173 mm | D ₂ 30 mm |
| LED source | RGBW - 2350 lumen | |
| Installation unit x output | 24 Vdc 700ma | 1 pcs |
| | 48 Vdc 700ma | 2 pcs |

| | |
|----------------------|-----------------------|
| PSU constant current | Remote with Drivenet |
| Finiture | 316L Steel and bronze |
| Optics | 10° - 25° - 40° |
| Filters | On demand |

| | | | |
|------|-------------------|-----------|--------|
| Code | 03.DN004.F | 10 | spot |
| | | 25 | medium |
| | | 40 | wide |



DONUT 12 N full color

| | | |
|----------------------------|-------------------|----------------------|
| H 170 mm | D 223 mm | D ₂ 77 mm |
| LED source | RGBW - 4700 lumen | |
| Installation unit x output | 24 Vdc 1400ma | 1 pcs |
| | 48 Vdc 700ma | 1 pcs |

| | |
|----------------------|-----------------------|
| PSU constant current | Remote with Drivenet |
| Finiture | 316L Steel and bronze |
| Optics | 10° - 25° - 40° |
| Filters | On demand |

| | | | | |
|------|------------------|----------------|--------------|--------|
| Code | 03.DN 008 | only for 48Vdc | .F 10 | spot |
| | 009 | only for 24Vdc | 25 | medium |
| | | | 40 | wide |



DONUT 18 N full color

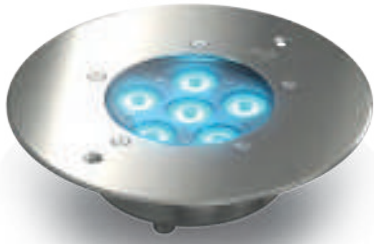
| | | |
|------------------------------|-------------------|-----------------------|
| H 170 mm | D 300 mm | D ₂ 100 mm |
| LED source | RGBW - 7050 lumen | |
| Installation unit x 2 output | 48 Vdc 700ma | 1 pcs |

| | |
|----------------------|-----------------------|
| PSU constant current | Remote with Drivenet |
| Finiture | 316L Steel and bronze |
| Optics | 10° - 25° - 40° |
| Filters | On demand |

| | | | |
|------|-------------------|-----------|--------|
| Code | 03.DN010.F | 10 | spot |
| | | 25 | medium |
| | | 40 | wide |



OUTDOOR



HELIOS 6 full color

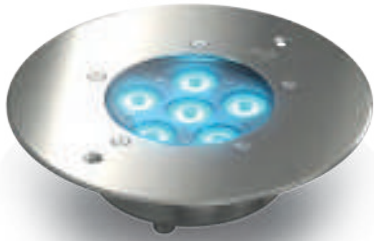
| | | |
|----------------------------|--|----------|
| H 78 mm | L 235 mm | D 235 mm |
| LED source | RGBW - 2350 lumens RGBA - 2200 lumens | |
| Installation unit x output | 24 Vdc 700ma | 1 pcs |
| | 48 Vdc 700ma | 2 pcs |

PSU constant current Remote with Drivenet

Finiture 316L Steel and Anodized Aluminium

Optics 10° - 25° - 40°

| | | | | | |
|------|----------------------|-----------------------------------|----------------|-----------|--------|
| Code | 03.EOS001E 99 | 316L Steel and Anodized Aluminium | FC RGBW | 10 | spot |
| | | | FY RGBA | 25 | medium |
| | | | | 40 | wide |



HELIOS.d 6 full color

| | | |
|------------|--|----------|
| H 78 mm | L 235 mm | D 235 mm |
| LED source | RGBW - 2350 lumens RGBA - 2200 lumens | |

PSU Remote constant voltage 27-48 Vdc

Finiture 316L Steel and Anodized Aluminium

Optics 10° - 25° - 40°

| | | | | | |
|------|----------------------|-----------------------------------|----------------|-----------|--------|
| Code | 03.EOS006E 99 | 316L Steel and Anodized Aluminium | FC RGBW | 10 | spot |
| | | | FY RGBA | 25 | medium |
| | | | | 40 | wide |



HELIOS 9 white

| | | |
|----------------------------|--|------------------------|
| H 78 mm | L 235 mm | D 235 mm |
| LED source | 3000 K - 2000 lumens 4000 K - 2350 lumens 5600 K - 2500 lumens | |
| Installation unit x output | 48 Vdc 700ma | 4 pcs (1 x channel) |

PSU constant current Remote with Drivenet

Finiture 316L Steel and Anodized Aluminium

Optics 10° - 25° - 40°

| | | | | | |
|------|----------------------|-----------------------------------|-----------------|-----------|--------|
| Code | 03.EOS003E 99 | 316L Steel and Anodized Aluminium | WB 3000K | 10 | spot |
| | | | WE 4000K | 25 | medium |
| | | | WG 5600K | 40 | wide |



DOCTUS 1



| | | |
|----------------------------|--|---------|
| H 114 mm | L 97 mm | D 80 mm |
| LED source | RGBW - 600 lumens RGBA - 550 lumens 3000K - 660 lumens 4000K - 700 lumens | |
| Installation unit x output | 24 Vdc 700ma | 6 pcs |
| | 48 Vdc 700ma | 12 pcs |

| | |
|----------------------|------------------------------------|
| PSU constant current | Remote with Drivenet |
| Finiture | White Black Silver |
| Optics | 10° - 25° - 40° 40x12° - 12x40° |
| Anti-glare | Honeycomb |

| | | | | | |
|------|-------------------|------------------|-----------------|------------------|------------------------|
| Code | 03.DTB002E | 06 white | FC RGBW | 10 spot | _ no anti-glare |
| | | 14 black | FY RGBA | 25 medium | A honeycomb |
| | | 28 silver | WB 3000K | 40 wide | |
| | | | WE 4000K | E1 40x12° | |
| | | | | E2 12x40° | |

DOCTUS 3



| | | |
|----------------------------|--|----------|
| H 172 mm | L 149 mm | D 124 mm |
| LED source | RGBW - 1300 lumens RGBA - 1170 lumens 3000K - 2200 lumens 4000K - 2650 lumens | |
| Installation unit x output | 24 Vdc 700ma | 2 pcs |
| | 48 Vdc 700ma | 4 pcs |

| | |
|----------------------|------------------------------------|
| PSU constant current | Remote with Drivenet |
| Finiture | White Black Silver |
| Optics | 10° - 25° - 40° 40x12° - 12x40° |
| Anti-glare | Honeycomb |

| | | | | | |
|------|-------------------|------------------|-----------------|------------------|------------------------|
| Code | 03.DTB006E | 06 white | FC RGBW | 10 spot | _ no anti-glare |
| | | 14 black | FY RGBA | 25 medium | A honeycomb |
| | | 28 silver | WB 3000K | 40 wide | |
| | | | WE 4000K | E1 40x12° | |
| | | | | E2 12x40° | |

DOCTUS 6



| | | |
|----------------------------|--|----------|
| H 167 mm | L 177 mm | D 156 mm |
| LED source | RGBW - 2400 lumens RGBA - 2160 lumens 3000K - 3600 lumens 4000K - 3900 lumens | |
| Installation unit x output | 24 Vdc 700ma | 1 pcs |
| | 48 Vdc 700ma | 2 pcs |

| | |
|----------------------|------------------------------------|
| PSU constant current | Remote with Drivenet |
| Finiture | White Black Silver |
| Optics | 10° - 25° - 40° 40x12° - 12x40° |
| Anti-glare | Honeycomb |

| | | | | | |
|------|-------------------|------------------|-----------------|------------------|------------------------|
| Code | 03.DTB010E | 06 white | FC RGBW | 10 spot | _ no anti-glare |
| | | 14 black | FY RGBA | 25 medium | A honeycomb |
| | | 28 silver | WB 3000K | 40 wide | |
| | | | WE 4000K | E1 40x12° | |
| | | | | E2 12x40° | |

DOCTUS 12



| | | |
|----------------------------|--|----------|
| H 211 mm | L 227 mm | D 204 mm |
| LED source | RGBW - 4660 lumens RGBA - 4200 lumens 3000K - 7550 lumens 4000K - 7900 lumens | |
| Installation unit x output | 48 Vdc 700ma | 1 pcs |

| | |
|----------------------|------------------------------------|
| PSU constant current | Remote with Drivenet |
| Finiture | White Black Silver |
| Optics | 10° - 25° - 40° 40x12° - 12x40° |
| Anti-glare | Honeycomb |

| | | | | | |
|------|-------------------|------------------|-----------------|------------------|------------------------|
| Code | 03.DTB014E | 06 white | FC RGBW | 10 spot | _ no anti-glare |
| | | 14 black | FY RGBA | 25 medium | A honeycomb |
| | | 28 silver | WB 3000K | 40 wide | |
| | | | WE 4000K | E1 40x12° | |
| | | | | E2 12x40° | |



DOCTUS.d 1 full color

H 114 mm L 97 mm D 80 mm

LED source RGBW - 600 lumens
RGBA - 550 lumens

PSU Remote constant voltage 24-48 Vdc

Finiture White
Black
Silver

Optics 10° - 25° - 40°
40x12° - 12x40°

Anti-glare Honeycomb

Code **03.DTB004E** **06** white **FC** RGBW **10** spot **_** no anti-glare
14 black **FY** RGBA **25** medium **A** honeycomb
28 silver **40** wide
E1 40x12°
E2 12x40°



DOCTUS.d 3 full color

H 172 mm L 149 mm D 124 mm

LED source RGBW - 1300 lumens
RGBA - 1170 lumens

PSU Remote constant voltage 24-48 Vdc

Finiture White
Black
Silver

Optics 10° - 25° - 40°
40x12° - 12x40°

Anti-glare Honeycomb

Code **03.DTB008E** **06** white **FC** RGBW **10** spot **_** no anti-glare
14 black **FY** RGBA **25** medium **A** honeycomb
28 silver **40** wide
E1 40x12°
E2 12x40°



DOCTUS.d 6 full color

H 167 mm L 177 mm D 156 mm

LED source RGBW - 2400 lumens
RGBA - 2160 lumens

PSU Remote constant voltage 35-48 Vdc

Finiture White
Black
Silver

Optics 10° - 25° - 40°
40x12° - 12x40°

Anti-glare Honeycomb

Code **03.DTB012E** **06** white **FC** RGBW **10** spot **_** no anti-glare
14 black **FY** RGBA **25** medium **A** honeycomb
28 silver **40** wide
E1 40x12°
E2 12x40°



DOCTUS.d 12 full color

H 211 mm L 227 mm D 204 mm

LED source RGBW - 4660 lumens
RGBA - 4200 lumens

PSU Remote constant voltage 35-48 Vdc

Finiture White
Black
Silver

Optics 10° - 25° - 40°
40x12° - 12x40°

Anti-glare Honeycomb

Code **03.DTB016E** **06** white **FC** RGBW **10** spot **_** no anti-glare
14 black **FY** RGBA **25** medium **A** honeycomb
28 silver **40** wide
E1 40x12°
E2 12x40°

DOCTUS 1 plug in



H 114 mm L 97 mm D 80 mm
 LED source 3000K - 660 lumens
 4000K - 700 lumens

PSU Remote constant voltage 24 Vdc
 Finiture White
 Black
 Silver
 Optics 10° - 25° - 40°
 40x12° - 12x40°
 Anti-glare Honeycomb

Code **03.DTB018E** **06** white **WB** 3000K **10** spot **_** no anti-glare
14 black **WE** 4000K **25** medium **A** honeycomb
28 silver **40** wide
E1 40x12°
E2 12x40°

DOCTUS 3 plug in



H 172 mm L 149 mm D 124 mm
 LED source 3000K - 2200 lumens
 4000K - 2650 lumens

PSU Remote constant voltage 24 Vdc
 Finiture White
 Black
 Silver
 Optics 10° - 25° - 40°
 40x12° - 12x40°
 Anti-glare Honeycomb

Code **03.DTB019E** **06** white **WB** 3000K **10** spot **_** no anti-glare
14 black **WE** 4000K **25** medium **A** honeycomb
28 silver **40** wide
E1 40x12°
E2 12x40°

DOCTUS.s 6 full color



H 167 mm L 177 mm D 156 mm
 LED source RGBW - 2400 lumens
 RGBA - 2160 lumens

PSU Remote constant voltage 35-48 Vdc
 Finiture White
 Black
 Silver
 Optics 10° - 25° - 40°
 40x12° - 12x40°
 Anti-glare Honeycomb

Code **03.DTBH11S** **06** white **FC** RGBW **10** spot **_** no anti-glare
14 black **FY** RGBA **25** medium **A** honeycomb
28 silver **40** wide
E1 40x12°
E2 12x40°

Hybrid connectors IP67 rated with water-proof caps
 (also available with end-stripped cables for: Power IN; DMX IN/OUT).

DOCTUS.s 12 full color



H 211 mm L 227 mm D 204 mm
 LED source RGBW - 4660 lumens
 RGBA - 4200 lumens

PSU Remote constant voltage 35-48 Vdc
 Finiture White
 Black
 Silver
 Optics 10° - 25° - 40°
 40x12° - 12x40°
 Anti-glare Honeycomb

Code **03.DTBH15S** **06** white **FC** RGBW **10** spot **_** no anti-glare
14 black **FY** RGBA **25** medium **A** honeycomb
28 silver **40** wide
E1 40x12°
E2 12x40°

Hybrid connectors IP67 rated with water-proof caps
 (also available with end-stripped cables for: Power IN; DMX IN/OUT).



BRICK 12



H 248 mm L 294 mm P 147 mm

LED source RGBW - 5800 lumens
RGBA - 5448 lumens

| | |
|---------------|--------------------------|
| PSU + Control | Onboard |
| Finiture | Silver white black |
| Optics | 08° - 10° - 25° - 40° |

| | | | | |
|------|-------------------|------------------|----------------|------------------------|
| Code | 03.LDB125S | 06 white | FC RGBW | 08 ultra narrow |
| | | 14 black | FY RGBA | 10 narrow |
| | | 28 silver | | 25 medium |
| | | | | 40 wide |

BRICK 24



H 248 mm L 439 mm P 147 mm

LED source RGBW - 11500 lumens
RGBA - 10800 lumens

| | |
|---------------|--------------------------|
| PSU + Control | Onboard |
| Finiture | Silver white black |
| Optics | 08° - 10° - 25° - 40° |

| | | | | |
|------|-------------------|------------------|----------------|------------------------|
| Code | 03.LDB105S | 06 white | FC RGBW | 08 ultra narrow |
| | | 14 black | FY RGBA | 10 narrow |
| | | 28 silver | | 25 medium |
| | | | | 40 wide |

BRICK 32



H 313 mm L 439 mm P 160 mm

LED source RGBW - 15300 lumens
RGBA - 14400 lumens

| | |
|---------------|--------------------------|
| PSU + Control | Onboard |
| Finiture | Silver white black |
| Optics | 08° - 10° - 25° - 40° |

| | | | | |
|------|-------------------|------------------|----------------|------------------------|
| Code | 03.LDB134S | 06 white | FC RGBW | 08 ultra narrow |
| | | 14 black | FY RGBA | 10 narrow |
| | | 28 silver | | 25 medium |
| | | | | 40 wide |





HI-LINE 30 white
 H 104 mm L 314 mm P 90 mm
 LED source 3000 K - 2720 lumens
 4000 K - 3180 lumens
 5000 K - 3500 lumens
 Installation unit x output 24 Vdc 700ma 2 pcs
 48 Vdc 700ma 4 pcs

PSU Remote with Drivenet
 Finiture Silver - White - Black
 Optics 11° - 30° - 45° - 65°
 40x12° - 12x40°
 ASY WASH - ASY SPOT

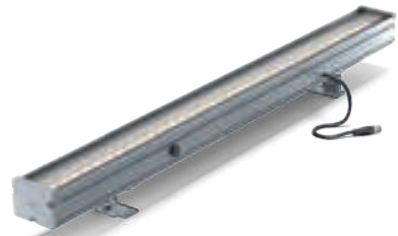
Code **03.HLB000E** **06** white **WB** 3000K **E1** 40X12°
14 black **WE** 4000K **E2** 12X40°
28 silver **WG** 5600K **10** Narrow
11 ASY WASH
14 ASY SPOT
25 Medium
40 Wide
41 Ultra Wide



HI-LINE 30 full color
 H 104 mm L 314 mm P 90 mm
 LED source RGBW - 1760 lumen
 Installation unit x output 24 Vdc 700ma 1 pcs
 48 Vdc 700ma 3 pcs

PSU Remote with Drivenet
 Finiture Silver - White - Black
 Optics 10° - 25° - 40°
 40x12° - 12x40°

Code **03.HLB000E** **06** white **FC** full color **E1** 40X12°
14 black **E2** 12X40°
28 silver **10** Narrow
25 Medium
40 Wide



HI-LINE 90 white
 H 104 mm L 894 mm P 90 mm
 LED source 3000 K - 7700 lumens
 4000 K - 9000 lumens
 5000 K - 9800 lumens
 Installation unit x output 48 Vdc 700ma 1 pcs

PSU Remote with Drivenet
 Finiture Silver - White - Black
 Optics 11° - 30° - 45° - 65°
 40x12° - 12x40°
 ASY WASH - ASY SPOT

Code **03.HLB100E** **06** white **WB** 3000K **E1** 40X12°
14 black **WE** 4000K **E2** 12X40°
28 silver **WG** 5600K **10** Narrow
11 ASY WASH
14 ASY SPOT
25 Medium
40 Wide
41 Ultra Wide



HI-LINE 90 full color
 H 104 mm L 894 mm P 90 mm
 LED source RGBW - 4680 lumen
 Installation unit x output 48 Vdc 700ma 1 pcs

PSU Remote with Drivenet
 Finiture Silver - White - Black
 Optics 10° - 25° - 40°
 40x12° - 12x40°

Code **03.HLB100E** **06** white **FC** full color **E1** 40X12°
14 black **E2** 12X40°
28 silver **10** Narrow
25 Medium
40 Wide



HI-LINE 30 white

| | | |
|----------------------------|--|---------|
| H 126 mm | L 314 mm | P 66 mm |
| LED source | 3000 K - 2720 lumens 4000 K - 3180 lumens 5000 K - 3500 lumens | |
| Installation unit x output | 24 Vdc 700ma | 2 pcs |
| | 48 Vdc 700ma | 4 pcs |

| | |
|----------|---|
| PSU | Remote with Drivenet |
| Finiture | Silver - White - Black |
| Optics | 11° - 30° - 45° - 65° 40x12° - 12x40° ASY WASH - ASY SPOT |

| | | | | |
|------|-------------------|------------------|-----------------|----------------------|
| Code | 03.HLB001E | 06 white | WB 3000K | E1 40X12° |
| | | 14 black | WE 4000K | E2 12X40° |
| | | 28 silver | WG 5600K | 10 Narrow |
| | | | | 11 ASY WASH |
| | | | | 14 ASY SPOT |
| | | | | 25 Medium |
| | | | | 40 Wide |
| | | | | 41 Ultra Wide |



HI-LINE 30 full color

| | | |
|----------------------------|-------------------|---------|
| H 126 mm | L 314 mm | P 66 mm |
| LED source | RGBW - 1760 lumen | |
| Installation unit x output | 24 Vdc 700ma | 1 pcs |
| | 48 Vdc 700ma | 3 pcs |

| | |
|----------|------------------------------------|
| PSU | Remote with Drivenet |
| Finiture | Silver - White - Black |
| Optics | 10° - 25° - 40° 40x12° - 12x40° |

| | | | | |
|------|-------------------|------------------|----------------------|------------------|
| Code | 03.HLB001E | 06 white | FC full color | E1 40X12° |
| | | 14 black | | E2 12X40° |
| | | 28 silver | | 10 Narrow |
| | | | | 25 Medium |
| | | | | 40 Wide |



HI-LINE 90 white

| | | |
|----------------------------|--|---------|
| H 126 mm | L 894 mm | P 66 mm |
| LED source | 3000 K - 7700 lumens 4000 K - 9000 lumens 5000 K - 9800 lumens | |
| Installation unit x output | 48 Vdc 700ma | 1 pcs |

| | |
|----------|---|
| PSU | Remote with Drivenet |
| Finiture | Silver - White - Black |
| Optics | 11° - 30° - 45° - 65° 40x12° - 12x40° ASY WASH - ASY SPOT |

| | | | | |
|------|-------------------|------------------|-----------------|----------------------|
| Code | 03.HLB101E | 06 white | WB 3000K | E1 40X12° |
| | | 14 black | WE 4000K | E2 12X40° |
| | | 28 silver | WG 5600K | 10 Narrow |
| | | | | 11 ASY WASH |
| | | | | 14 ASY SPOT |
| | | | | 25 Medium |
| | | | | 40 Wide |
| | | | | 41 Ultra Wide |



HI-LINE 90 full color

| | | |
|----------------------------|-------------------|---------|
| H 126 mm | L 894 mm | P 66 mm |
| LED source | RGBW - 4680 lumen | |
| Installation unit x output | 48 Vdc 700ma | 1 pcs |

| | |
|----------|------------------------------------|
| PSU | Remote with Drivenet |
| Finiture | Silver - White - Black |
| Optics | 10° - 25° - 40° 40x12° - 12x40° |

| | | | | |
|------|-------------------|------------------|----------------------|------------------|
| Code | 03.HLB101E | 06 white | FC full color | E1 40X12° |
| | | 14 black | | E2 12X40° |
| | | 28 silver | | 10 Narrow |
| | | | | 25 Medium |
| | | | | 40 Wide |

HI-LINE.s 30 white

H 184 mm L 326 mm P 80 mm
 LED source 3000 K - 2720 lumens
 4000 K - 3180 lumens
 5000 K - 3500 lumens

PSU + Dali 2 Onboard
 Finiture Silver - White - Black
 Optics 11° - 30° - 45° - 65°
 40x12° - 12x40°
 ASY WASH - ASY SPOT



| | | | | |
|------|-------------------|------------------|-----------------|----------------------|
| Code | 03.HLB001S | 06 white | WB 3000K | E1 40X12° |
| | | 14 black | WE 4000K | E2 12X40° |
| | | 28 silver | WG 5600K | 10 Narrow |
| | | | | 11 ASY WASH |
| | | | | 14 ASY SPOT |
| | | | | 25 Medium |
| | | | | 40 Wide |
| | | | | 41 Ultra Wide |

HI-LINE.s 30 full color

H 184 mm L 326 mm P 80 mm
 LED source RGBW - 1760 lumen

PSU + Control Onboard
 Finiture Silver - White - Black
 Optics 10° - 25° - 40°
 40x12° - 12x40°



| | | | | |
|------|-------------------|------------------|----------------------|------------------|
| Code | 03.HLB001S | 06 white | FC full color | E1 40X12° |
| | | 14 black | | E2 12X40° |
| | | 28 silver | | 10 Narrow |
| | | | | 25 Medium |
| | | | | 40 Wide |

HI-LINE.s 90 white

H 178 mm L 894 mm P 80 mm
 LED source 3000 K - 7700 lumens
 4000 K - 9000 lumens
 5000 K - 9800 lumens

PSU + Dali 2 Onboard
 Finiture Silver - White - Black
 Optics 11° - 30° - 45° - 65°
 40x12° - 12x40°
 ASY WASH - ASY SPOT



| | | | | |
|------|-------------------|------------------|-----------------|----------------------|
| Code | 03.HLB101S | 06 white | WB 3000K | E1 40X12° |
| | | 14 black | WE 4000K | E2 12X40° |
| | | 28 silver | WG 5600K | 10 Narrow |
| | | | | 11 ASY WASH |
| | | | | 14 ASY SPOT |
| | | | | 25 Medium |
| | | | | 40 Wide |
| | | | | 41 Ultra Wide |

HI-LINE.s 90 full color

H 178 mm L 894 mm P 80 mm
 LED source RGBW - 4680 lumen

PSU + Control Onboard
 Finiture Silver - White - Black
 Optics 10° - 25° - 40°
 40x12° - 12x40°



| | | | | |
|------|-------------------|------------------|----------------------|------------------|
| Code | 03.HLB101S | 06 white | FC full color | E1 40X12° |
| | | 14 black | | E2 12X40° |
| | | 28 silver | | 10 Narrow |
| | | | | 25 Medium |
| | | | | 40 Wide |



HI-LINE.s 30 white

H 184 mm L 326 mm P 80 mm

LED source 3000 K - 2720 lumens
4000 K - 3180 lumens
5000 K - 3500 lumens

PSU + Dali 2 Onboard

Finiture Silver - White - Black

Optics 11° - 30° - 45° - 65°
40x12° - 12x40°
ASY WASH - ASY SPOT

| | | | | | |
|------|-------------------|------------------|-----------------|------------|----------|
| Code | 03.HLB001S | 06 white | WB 3000K | E1 | 40X12° |
| | | 14 black | WE 4000K | E2 | 12X40° |
| | | 28 silver | WG 5600K | 10 | Narrow |
| | | | | 11 | ASY WASH |
| | | | | 14 | ASY SPOT |
| | | | | 25 | Medium |
| | | | 40 | Wide | |
| | | | 41 | Ultra Wide | |



HI-LINE.s 30 full color

H 184 mm L 326 mm P 80 mm

LED source RGBW - 1760 lumen

PSU + Control Onboard

Finiture Silver - White - Black

Optics 10° - 25° - 40°
40x12° - 12x40°

| | | | | | |
|------|-------------------|------------------|----------------------|-----------|--------|
| Code | 03.HLB001S | 06 white | FC full color | E1 | 40X12° |
| | | 14 black | | E2 | 12X40° |
| | | 28 silver | | 10 | Narrow |
| | | | | 25 | Medium |
| | | | | 40 | Wide |



HI-LINE.s 90 white

H 178 mm L 894 mm P 80 mm

LED source 3000 K - 7700 lumens
4000 K - 9000 lumens
5000 K - 9800 lumens

PSU + Dali 2 Onboard

Finiture Silver - White - Black

Optics 11° - 30° - 45° - 65°
40x12° - 12x40°
ASY WASH - ASY SPOT

| | | | | | |
|------|-------------------|------------------|-----------------|------------|----------|
| Code | 03.HLB101S | 06 white | WB 3000K | E1 | 40X12° |
| | | 14 black | WE 4000K | E2 | 12X40° |
| | | 28 silver | WG 5600K | 10 | Narrow |
| | | | | 11 | ASY WASH |
| | | | | 14 | ASY SPOT |
| | | | | 25 | Medium |
| | | | 40 | Wide | |
| | | | 41 | Ultra Wide | |



HI-LINE.s 90 full color

H 178 mm L 894 mm P 80 mm

LED source RGBW - 4680 lumen

PSU + Control Onboard

Finiture Silver - White - Black

Optics 10° - 25° - 40°
40x12° - 12x40°

| | | | | | |
|------|-------------------|------------------|----------------------|-----------|--------|
| Code | 03.HLB101S | 06 white | FC full color | E1 | 40X12° |
| | | 14 black | | E2 | 12X40° |
| | | 28 silver | | 10 | Narrow |
| | | | | 25 | Medium |
| | | | | 40 | Wide |

HI-LINE.s 30 evo full color

H 184 mm L 326 mm P 80 mm
LED source RGBW - 1760 lumen

| | |
|---------------|--|
| PSU + Control | Onboard |
| Finiture | Silver - White - Black |
| Optics | 11° - 30° - 45° - 65° 40x12° - 12x40° |



| | | | | |
|------|-------------------|------------------|----------------------|------------------|
| Code | 03.HLB002S | 06 white | FC full color | E1 40X12° |
| | | 14 black | | E2 12X40° |
| | | 28 silver | | 10 Narrow |
| | | | | 25 Medium |
| | | | | 40 Wide |

HI-LINE.s 30 evo full color

H 184 mm L 326 mm P 80 mm
LED source RGBW - 1760 lumen

| | |
|---------------|------------------------------------|
| PSU + Control | Onboard |
| Finiture | Silver - White - Black |
| Optics | 10° - 25° - 40° 40x12° - 12x40° |



| | | | | |
|------|-------------------|------------------|----------------------|------------------|
| Code | 03.HLB003S | 06 white | FC full color | E1 40X12° |
| | | 14 black | | E2 12X40° |
| | | 28 silver | | 10 Narrow |
| | | | | 25 Medium |
| | | | | 40 Wide |

HI-LINE.s 90 evo full color

H 178 mm L 894 mm P 80 mm
LED source RGBW - 4680 lumen

| | |
|---------------|--|
| PSU + Control | Onboard |
| Finiture | Silver - White - Black |
| Optics | 11° - 30° - 45° - 65° 40x12° - 12x40° |



| | | | | |
|------|-------------------|------------------|----------------------|------------------|
| Code | 03.HLB102S | 06 white | FC full color | E1 40X12° |
| | | 14 black | | E2 12X40° |
| | | 28 silver | | 10 Narrow |
| | | | | 25 Medium |
| | | | | 40 Wide |

HI-LINE.s 90 evo full color

H 178 mm L 894 mm P 80 mm
LED source RGBW - 4680 lumen

| | |
|---------------|------------------------------------|
| PSU + Control | Onboard |
| Finiture | Silver - White - Black |
| Optics | 10° - 25° - 40° 40x12° - 12x40° |



| | | | | |
|------|-------------------|------------------|----------------------|------------------|
| Code | 03.HLB103S | 06 white | FC full color | E1 40X12° |
| | | 14 black | | E2 12X40° |
| | | 28 silver | | 10 Narrow |
| | | | | 25 Medium |
| | | | | 40 Wide |





FOCUS.d.o 1 zoom fullcolor

H 144 mm L 110 mm P 188 mm
LED source RGBW - 860 lumen

PSU Remote constant voltage 12-48 Vdc
Finiture Anodized aluminium black
 Anodized aluminium silver
Optics zoom 3,5° / 21°

Code **03.LCB016E** **11** Anodized aluminium black **FC** RGBW **99** zoom 3,5° / 21°
 21 Anodized aluminium silver **FY** RGBA



INDOOR

FOCUS.d.i 1 zoom fullcolor

PSU Remote constant voltage 12-48 Vdc

Finiture Silver

H 117 mm L 99.5 mm P 183 mm

Optics Zoom 3,5 / 21°

LED source RGBW - 450 lumen



Code **03.LCB009E 21** (silver) **FC** RGBW **99** zoom 3,5° / 21°
 FY RGBA





VICE 1 full color

| | | | |
|-------------------------------|-------------------|-------|--------|
| H 88.5 mm | D 64 mm | | |
| LED source | RGBW - 415 lumens | | |
| Installation unit x output | 24 Vdc | 700ma | 6 pcs |
| | 48 Vdc | 700ma | 12 pcs |

| | |
|----------|-----------------------------------|
| PSU | Remote constant voltage 12-48 Vdc |
| Finiture | white |
| Optics | 25° - 40° |

| | | | | | | |
|------|-------------------|-------------------|-----------|------|------------------------|----------------|
| Code | 03.LVS004E | 03 (white) | FC | RGBW | 25 40 | Medium Wide |
|------|-------------------|-------------------|-----------|------|------------------------|----------------|

INDOOR INSTALLATION IP20

VICE



FREELINE 30 white

| | | |
|----------------------------|--|---------------------------------|
| H 65 mm | L 318 mm | P 51 mm |
| LED source | 3000 K - 1360 lumens 4000 K - 1590 lumens | |
| Installation unit x output | 24 Vdc 700ma | 4 pcs 8 pcs (1 x channel) |

| | |
|----------|-----------------------------|
| PSU | Remote with Drivenet |
| Finiture | Anodized Aluminium Silver |
| Optics | 10° - 25° - 40° - 58° - 77° |



| | | |
|------|--|-----------------------------------|
| Code | 03.LFB004E 21 anodized aluminium silver | WB 3000 K 10 spot |
| | | WE 4000 K 25 medium |
| | | 40 wide |
| | | 02 ultrawide |
| | | 03 wash |

FREELINE 60 white

| | | |
|----------------------------|--|----------------------|
| H 65 mm | L 602 mm | P 51 mm |
| LED source | 3000 K - 2720 lumens 4000 K - 3180 lumens | |
| Installation unit x output | 48 Vdc 700ma | 4 pcs 1 x channel |

| | |
|----------|-----------------------------|
| PSU | Remote with Drivenet |
| Finiture | Anodized Aluminium Silver |
| Optics | 10° - 25° - 40° - 58° - 77° |



| | | |
|------|--|-----------------------------------|
| Code | 03.LFB005E 21 anodized aluminium silver | WB 3000 K 10 spot |
| | | WE 4000 K 25 medium |
| | | 40 wide |
| | | 02 ultrawide |
| | | 03 wash |

FREELINE 90 white

| | | |
|----------------------------|--|----------------------|
| H 65 mm | L 884 mm | P 51 mm |
| LED source | 3000 K - 4080 lumens 4000 K - 4770 lumens | |
| Installation unit x output | 24 Vdc 1600ma | 4 pcs 1 x channel |

| | |
|----------|-----------------------------|
| PSU | Remote with Drivenet |
| Finiture | Anodized Aluminium Silver |
| Optics | 10° - 25° - 40° - 58° - 77° |



| | | |
|------|--|-----------------------------------|
| Code | 03.LFB006E 21 anodized aluminium silver | WB 3000 K 10 spot |
| | | WE 4000 K 25 medium |
| | | 40 wide |
| | | 02 ultrawide |
| | | 03 wash |

DIVE SERIES

ON REQUEST

| | | |
|----------------------------|--|-----------------------------|
| • model 1, 3, 6N: | HUB-IP56 Screw terminals 1 IN / 3 OUT HUB-IP20 Screw terminals 1 IN / 3 OUT | 03.LA.131.IP56 03.LA.131 |
| • model 1 and 3: | 8-pole underwater cable | 0509C113 |
| • model 6N and 12N: | 8-pole underwater cable | 0509C159 |

AKHELIOS SERIES

ON REQUEST

| | | |
|----------------------------|---------------------------------------|--------------|
| • model 1 and 3: | 8-pole underwater cable | 0509C113 |
| • model 6N and 12N: | 8-pole underwater cable | 0509C159 |
| • model 6N: | Outer case stay-in-place casting form | 03.LA.078.V1 |
| • model 12N: | Outer case stay-in-place casting form | 03.LA.059.V1 |

DONUT SERIES

ONN REQUEST

| | | |
|----------------------|--|-----------------------------|
| • all models: | 8-pole underwater cable | 0509C159 |
| • model 6: | HUB-IP56 Screw terminals 1 IN / 3 OUT HUB-IP20 Screw terminals 1 IN / 3 OUT | 03.LA.131.IP56 03.LA.131 |

HELIOS SERIES

ON REQUEST

| | | |
|----------------------|---|---|
| • all models: | Outer case IP20 rated | 03.LA.190.V1 |
| • model 6: | HUB-IP56 Screw terminals 1 IN / 3 OUT HUB-IP20 Screw terminals 1 IN / 3 OUT length 10 mt - 33 ft length 30 mt - 98 ft length 50 mt - 164 ft length 100 mt - 328 ft Outdoor extension cable M12 M/F 8 pins - cable Ø 6 mm 50m / 164ft length (call for length) Y-BOX IP65 M12 | 03.LA.131.IP56 03.LA.131 02K001157.10 02K001157.30 02K001157.50 02K001157.100 03.LA.035.50 03.LA.037 |
| • model 9 WH: | Constant current PSU 700mA 9 ÷ 48Vdc - Max. 1 unit 500-1400mA 60W *Push Dimming *DALI *230Vac 500- 1400mA 60W *Push Dimming *DALI *100Vac 2-pole underwater cable | 0502T031 0514M240 0514M241 0509C081 |
| • model .d 6: | PSU a corrente costante - Massimo 1 unità PSU a corrente costante 48Vdc 240W IP67 Massimo 4 unità collegate in parallelo Dongle DLC 901 Cavo da esterno a 4-poli 4 x 0,5 mm ² Interfaccia per aggiornamento software DTS Dongle firmware | 0502T063 0502T099 03.LA.063.1 0509C152 03.LA.206 |

DOCTUS SERIES

INCLUDED

| | | |
|----------------------|-----------------------------------|-----------|
| • all models: | CONN. M12 MALE 8POLE VOL L=0,46MT | 02K001152 |
|----------------------|-----------------------------------|-----------|

ON REQUEST

| | | |
|---------------------------|--|--|
| • all models: | Safety cable - 3x600mm - max capacity load 30 kg (66lbs) | code 0521A010 |
| • standard models: | 8-pole outdoor cable 8 x 0,25 mm ² | 0509C062.PUR |
| • WH models: | 8-pole outdoor cable 8 x 0,25 mm ² | 0509C062.PUR |
| • .d models: | 4-pole outdoor cable 4x0,5mm ² Dongle DLC 901 DTS firmware uploader dongle Constant voltage PSU 48Vdc 100W IP67 Constant voltage PSU 240W-48Vdc IP67 ON-OFF | 0509C152 03.LA.063.1 03.LA.206 0502T063 0502T099 |
| • 1 led models: | Top hat silver Top hat black | 03.LA.246 03.LA.246.14 |
| • 3 leds models: | Top hat silver Top hat black Top hat white | 03.LA.247 03.LA.247.14 03.LA.247.06 |
| • 6 leds models: | Top hat silver Top hat black | 03.LA.248 code 03.LA.248.14 |
| • 12 leds models: | Top hat silver Top hat black | 03.LA.249 03.LA.249.14 |
| • 6 leds models: | Top hat silver Top hat black | 03.LA.248 code 03.LA.248.14 |

BRICK SERIES

ON REQUEST

| | | |
|--|--|--------------|
| • all models: | Permanent installation kit IP68 | 03.LA.214 |
| | Outdoor DMX cable 2 x 0.25 mm ² - Flame retardant (call for length) | 0509C158 |
| | Safety cable 3 x 600 mm - BGV-C1 certified | 0521A049 |
| | DTS firmware uploader dongle | 03.LA.206 |
| • model 12 and 24: | Power supply cable 3 x 1 mm ² (call for length) | 0509C160 |
| • model 12: | Filter 10° | 0506A101.D12 |
| | Filter 20° | 0506A043.D12 |
| | Filter 40° | 0506A045.D12 |
| | Filter 60° | 0506A103.D12 |
| | Filter 80° | 0506A121.D12 |
| | Filter 60°x10° | 0506A092.D12 |
| | Filter 10°x60° | 0506A048.D12 |
| | Filter 60°x30° | 0506A119.D12 |
| | Filter 30°x60° | 0506A133.D12 |
| | Barndoor black + Qualicoat Seaside finishing | 03.LA.211.15 |
| | Barndoor silver + Qualicoat Seaside finishing | 03.LA.211.41 |
| | Barndoor white + Qualicoat Seaside finishing | 03.LA.211.06 |
| | Visor black + Qualicoat Seaside finishing | 03.LA.230.15 |
| Visor silver + Qualicoat Seaside finishing | 03.LA.230.41 | |
| Visor white + Qualicoat Seaside finishing | 03.LA.230.06 | |
| • model 24: | Filter 10° | 0506A101.D11 |
| | Filter 20° | 0506A043.D11 |
| | Filter 40° | 0506A045.D11 |
| | Filter 60° | 0506A103.D11 |
| | Filter 80° | 0506A121.D11 |
| | Filter 60°x10° | 0506A092.D11 |
| | Filter 10°x60° | 0506A048.D11 |
| | Filter 60°x30° | 0506A119.D11 |
| | Filter 30°x60° | 0506A133.D11 |
| | Barndoor black + Qualicoat Seaside finishing | 03.LA.210.15 |
| | Barndoor silver + Qualicoat Seaside finishing | 03.LA.210.41 |
| | Barndoor white + Qualicoat Seaside finishing | 03.LA.210.06 |
| | Visor black + Qualicoat Seaside finishing | 03.LA.229.15 |
| Visor silver + Qualicoat Seaside finishing | 03.LA.229.41 | |
| Visor white + Qualicoat Seaside finishing | 03.LA.229.06 | |
| • model 32: | Power supply cable 3 x 1,5 mm ² (call for length) | 0509C040 |
| | Filter 10° | 0506A101.D18 |
| | Filter 20° | 0506A043.D18 |
| | Filter 40° | 0506A045.D18 |
| | Filter 60° | 0506A103.D18 |
| | Filter 80° | 0506A121.D18 |
| | Filter 60°x10° | 0506A092.D18 |
| | Filter 10°x60° | 0506A048.D18 |
| | Filter 60°x30° | 0506A119.D18 |
| | Filter 30°x60° | 0506A133.D18 |
| | Barndoor black + Qualicoat Seaside finishing | 03.LA.237.15 |
| | Barndoor silver + Qualicoat Seaside finishing | 03.LA.237.41 |
| | Barndoor white + Qualicoat Seaside finishing | 03.LA.237.06 |
| Visor black + Qualicoat Seaside finishing | 03.LA.236.15 | |
| Visor silver + Qualicoat Seaside finishing | 03.LA.236.41 | |
| Visor white + Qualicoat Seaside finishing | 03.LA.236.06 | |

FOCUS SERIES

ON REQUEST

| | | |
|----------------------|---|-------------|
| • all models: | Constant voltage PSU 48Vdc 100W IP67 (Max 1 unit) | 0502T063 |
| | Dongle DLC 901 | 03.LA.063.1 |
| | DTS dongle firmware uploader | 03.LA.206 |
| | Safety cable - 0.3x60 cm - max. capacity load 60 Kg | 0521A010 |
| | DMX Power Hub Max. 4 units (1 item per output) | 03.LA.227 |
| • model .d.o 1 zoom: | 4-pole outdoor cable | 0509C152 |
| | Top hat | 03.LA.231 |
| • model .d.i 1 zoom: | 4-pole outdoor cable | 0509C083 |

VICE SERIES

ON REQUEST

| | | |
|---------------|--------------------------------------|----------------|
| • all models: | HUB-IP20 Screw terminal 1 in / 3 out | 03.LA.131 |
| | HUB-IP56 Screw terminal 1 in / 3 out | 03.LA.131.IP56 |
| | 8-pole outdoor cable | 0509C062.PUR |





LIGHTING CONTROL SYSTEMS



Architectural light must emphasize, enhance, discover the dimension of what it illuminates. For this reason, it also adds at the ability to illuminate, the control of color and light intensity.






They grant the ability to give three-dimensionality to forms and add dynamic and animation to the static nature of architectural structures. In doing so, they become an integral part of the architecture, complementing its dimensions and uniqueness.

DTS integrates to its projectors, the best light control systems designed to meet any architectural lighting need, from the simplest to the most complex.

| | PSU | Outputs | 24 Vdc 700 mA | 24 Vdc 1400 mA | 48 Vdc 700 mA |
|---|--|---------|------------------|-------------------|------------------|
|  | DriveNet 28 C din 120-240 Vac 50-60 Hz 159.6 x 91.2 x 62.3 mm | 2 | 03.LA.239 | --- | 03.LA.239 |
|  | DriveNet 28 Ez 88 x 112 x 295 mm 120-240 Vac 50-60 Hz | 2 | --- | --- | 03.LA.288 |
|  | DriveNet 416 88 x 480 x 497 mm 120-240 Vac 50-60 Hz | 4 | --- | --- | 03.LA.196 |
|  | DriveNet 832 88 x 480 x 497 mm 120-240 Vac 50-60 Hz | 8 | 03.LA.177.V2 | 03.LA.184.V2 | 03.LA.177 |
|  | DriveNet 1664 131 x 480 x 497 mm 180-240 Vac 50-60 Hz | 16 | 03.LA.195 | --- | 03.LA.198 |

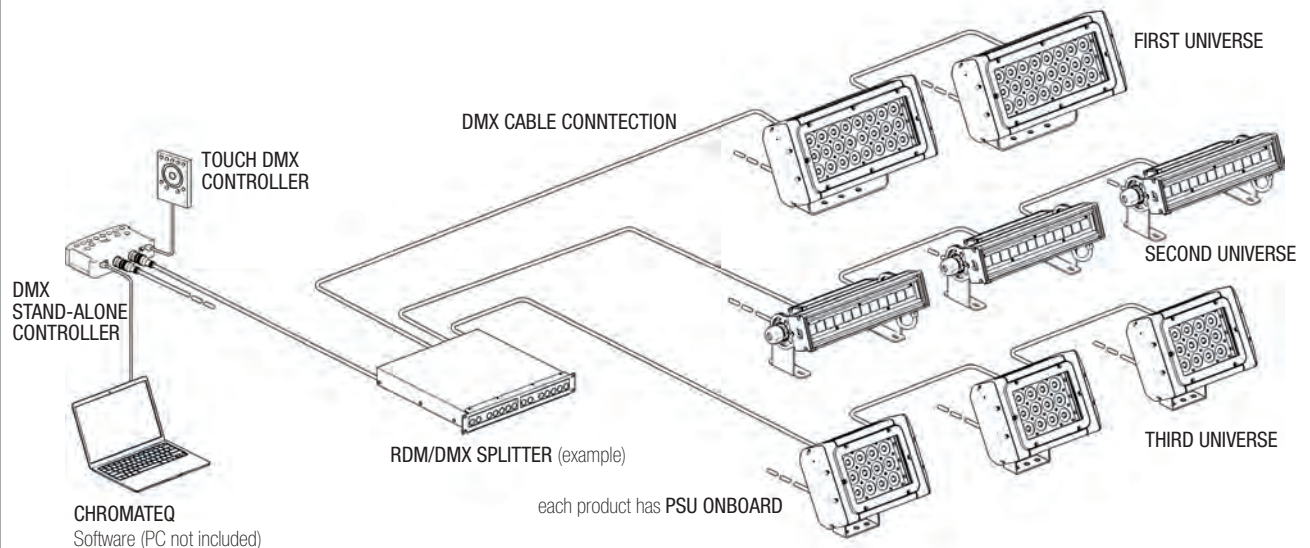
BEWARE: 48 Vdc supply is just allowed only in installation where human entry is forbidden

| Products that can be mounted for each output | 24 Vdc 700 mA | 24 Vdc 1400 mA | 48 Vdc 700 mA |
|--|------------------|-------------------|------------------|
| Dive 1, Akhelios 1 | 6 pcs | --- | 12 pcs |
| Dive 3, Akhelios 3 | 2 pcs | --- | 4 pcs |
| Dive 6, Akhelios 6 | 1 pc | --- | 2 pcs |
| Dive 12, Akhelios 12, Donut 12 | --- | 1 pc | 1 pc |
| Donut 18 | --- | --- | 1 pc |

| | PSU | Outputs | 24 Vdc 700 mA | 24 Vdc 1600 mA | 48 Vdc 700 mA |
|--|--|---------|------------------|-------------------|------------------|
|  | DriveNet 28 C din 120-240 Vac 50-60 Hz 159.6 x 91.2 x 62.3 mm | 2 | 03.LA.239 | --- | 03.LA.239 |
|  | DriveNet 28 Ez 88 x 112 x 295 mm 120-240 Vac 50-60 Hz | 2 | --- | --- | 03.LA.288 |
|  | DriveNet 416 88 x 480 x 497 mm 120-240 Vac 50-60 Hz | 4 | --- | --- | 03.LA.196 |
|  | DriveNet 832 88 x 480 x 497 mm 120-240 Vac 50-60 Hz | 8 | 03.LA.177.V2 | 03.LA.184.V2 | 03.LA.177 |
|  | DriveNet 1664 131 x 480 x 497 mm 180-240 Vac 50-60 Hz | 16 | 03.LA.195 | --- | 03.LA.198 |

| Products that can be mounted for each output | 24 Vdc 700 mA | 24 Vdc 1600 mA | 48 Vdc 700 mA |
|--|------------------|-------------------|------------------|
| Doctus 1, Vice 1 (1 Led) | 6 pcs | --- | 12 pcs |
| Doctus 3 (3 Leds) | 2 pcs | --- | 4 pcs |
| Hi-Line 30 WH (12 Leds) | 2 pcs | --- | 4 pcs |
| Hi-Line 30 FC (4 Leds) | 1 pc | --- | 3 pcs |
| Doctus 6, Helios 6 (6 Leds) | 1 pc | --- | 2 pcs |
| Hi-Line 90 WH (36 Leds) | --- | --- | 1 pc |
| Hi-Line 90 FC (12 Leds) | --- | --- | 1 pc |
| Freeline 30 WH (6 Leds) 1 x channel | 4 pcs | --- | 8 pcs |
| HELIOS 9 WH (9 Leds) 1 x channel | --- | --- | 4 pcs |
| Freeline 60 WH (12 Leds) 1 x channel | --- | --- | 4 pcs |
| Freeline 90 WH (18 Leds) 1 x channel | --- | 4 pcs | --- |

STANDARD DMX CONTROL SYSTEM



The integration of Drivenet and the DMX controller system creates a comprehensive solution that offers professional lighting designers significant flexibility and control. Here's a more detailed summary of the advantages these systems bring when used together:

Key Benefits of the Drivenet and DMX Controller System:

1. Precision Control:

- DMX offers precise control over individual lighting fixtures, enabling designers to fine-tune lighting effects down to minute details like intensity, color, and movement. This level of precision is critical for dynamic environments such as stage performances and concerts.

2. Efficiency:

- The Drivenet system significantly reduces the complexity of cable management by delivering both power and data over a single line, making installation faster and more streamlined. This is particularly advantageous in large venues where extensive cabling can otherwise become cumbersome.
- Centralized control of power and data distribution optimizes energy usage and reduces the risk of connectivity issues that come with multiple individual connections.

3. Scalability:

- Whether used for a small stage production or a large-scale outdoor architectural display, the combination of Drivenet and DMX can scale easily. The system can handle a few fixtures or hundreds of them by simply adding more Drivenet hubs and DMX addresses.
- This scalability is critical for professional setups where lighting needs might evolve or expand over time.

4. User-Friendly Operation:

- Despite the complexity of the technology behind these systems, they are designed to be intuitive and easy to operate, with user-friendly interfaces, making it easier for lighting technicians to control complex lighting sequences without extensive technical expertise. The setup is further simplified by the compatibility of Drivenet hubs with common lighting protocols like DMX and Art-Net, allowing technicians to plug and play with familiar devices.

5. Versatility:

- The system is equally suited for different lighting scenarios: live events, theatrical performances, concerts, or architectural installations. Its versatility makes it a go-to solution for lighting professionals who need to manage diverse and changing lighting setups.

6. Remote Control & Networking:

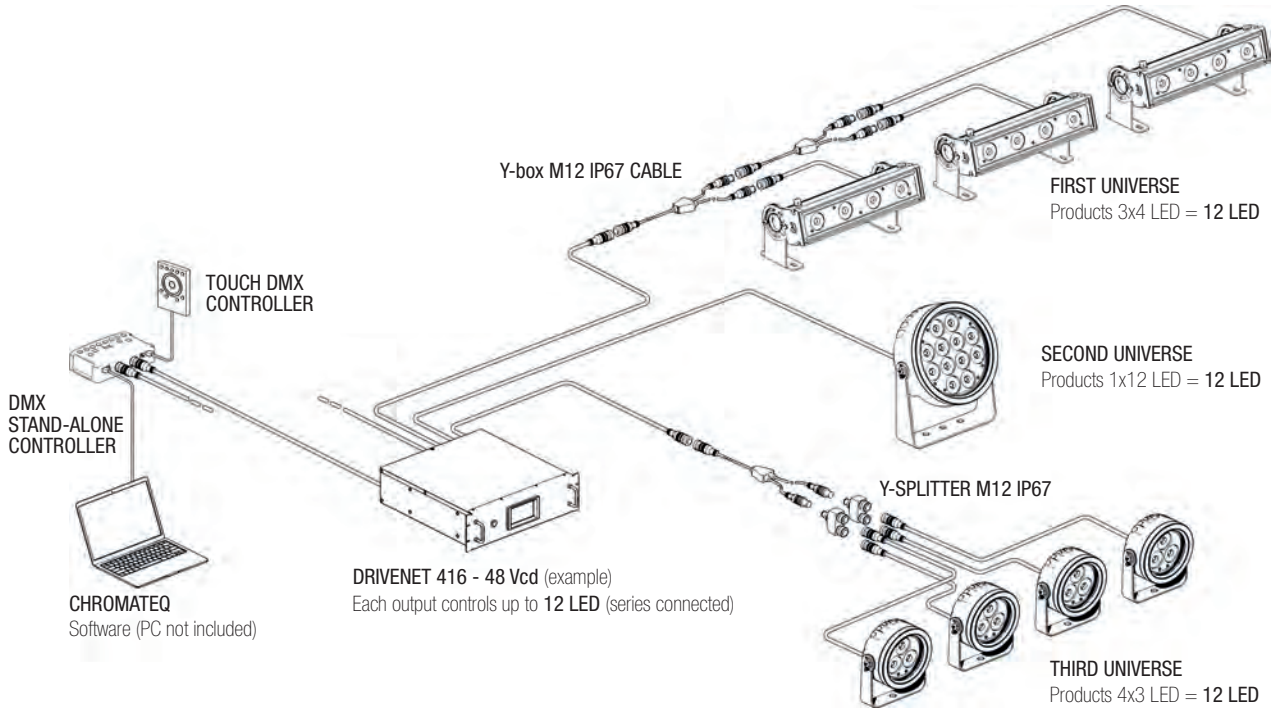
- Remote management capabilities are supported through network-based control (using Ethernet or Art-Net), allowing lighting operators to monitor and adjust settings from distant locations, which is crucial for large venues or outdoor setups where physical access to lighting rigs may be difficult.
- This is especially helpful for large-scale productions or installations where quick, real-time adjustments are needed without physically accessing each fixture.

7. Reliability:

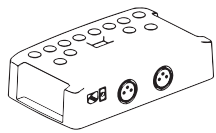
- With DTS Lighting's high-quality components, the system is robust and built for reliability in demanding environments. Drivenet ensures that power and data transmission are steady, minimizing downtime or interruptions, which is vital during live events.

By combining the Drivenet system's power/data distribution capabilities with the DMX controller's detailed control, this solution provides lighting professionals with a powerful toolset for creating dynamic, complex lighting designs. The seamless integration of these systems delivers an advanced, reliable, and efficient solution for any scenario whether it's a theater production, concert, or large-scale architectural lighting installation.

DRIVENET LOW VOLTAGE CONTROL SYSTEM



SYSTEM INTEGRATION PRODUCTS

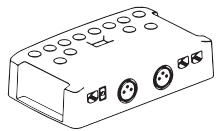


DMX STAND-ALONE CONTROLLER

03.E1333

512 CHANNELS

The DMX Stand-alone Controller is the definitively perfect DMX controller for all type of architectural projects. It can play 1 to 5 zones (scene). Software Chromateq included.



DMX STAND-ALONE CONTROLLER

03.E134

1024 CHANNELS

The DMX Stand-alone Controller is the definitively perfect DMX controller for all type of architectural projects. It can play 1 to 5 zones (scene). Software Chromateq included.

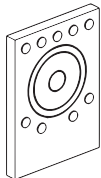
E-PRO DMX STAND-ALONE CONTROLLER

03.E1335

1024 CHANNELS Stand-alone mode: Up to 8 universes / Live mode: Up to 16 universes.

THE E-PRO DMX Stand-alone Controller, includes an Ethernet port in addition to the USB port. This gives long distance access and communication with the device anywhere on a local network (LAN & WLAN) or on the internet (via WEB Server).

Software Chromateq included.



TOUCH DMX CONTROLLER

03.LA.256

1024 CHANNELS Stand-alone controller

The TOUCH DMX Lighting control interface comes with a sleek design and visually intuitive multifunction touch-sensitive surface for all your indoor installations.

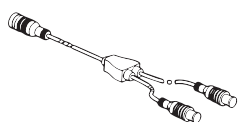


Y-SPLITTER M12 IP67

03.LA.209.S

1 x 8 contacts Male connector - 2 x 8 contacts Female connectors

The Y-Splitter M12 IP67 is an accessory to connect on series two or more fixtures facilitating cabling while maintaining the IP67 rating.



Y-BOX M12 IP67 CABLE

03.LA.037

1 x 8 contacts Male connector - 2 x 8 contacts Female connectors

The Y-Box M12 IP67 Cable is an accessory to connect on series two or more fixtures facilitating cabling while maintaining the IP67 rating.

